

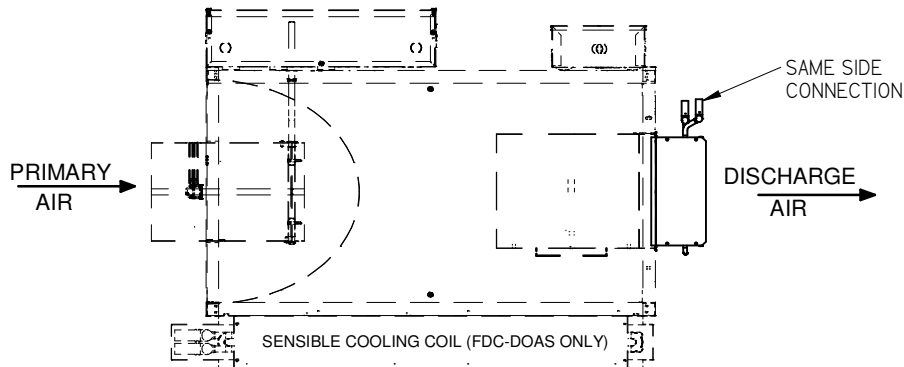
SLIP & DRIVE CONNECTION

HOOK LANCE CONNECTION



UNIT SIZE	IMPERIAL UNITS (inches)							
	STANDARD COILS				HIGH CAPACITY COILS			
	B	C	CONNECTION SIZES		B	C	CONNECTION SIZES	
			1 ROW	2 ROW			1 ROW	2 ROW
10	12	10	1/2	7/8	14	12 1/2	1/2	7/8
20	16	15	7/8	7/8	20	17 1/2	1/2	7/8
30	16	15	7/8	7/8	20	17 1/2	1/2	7/8
40	16	15	7/8	7/8	20	17 1/2	1/2	7/8
50	20	17 1/2	7/8	7/8	28	17 1/2	7/8	7/8

UNIT SIZE	SI UNITS (mm)							
	STANDARD COILS				HIGH CAPACITY COILS			
	B	C	CONNECTION SIZES		B	C	CONNECTION SIZES	
			1 ROW	2 ROW			1 ROW	2 ROW
10	305	254	13	22	356	318	13	22
20	406	381	22	22	508	445	13	22
30	406	381	22	22	508	445	13	22
40	406	381	22	22	508	445	13	22
50	508	445	22	22	711	445	22	22



**NOTES:**

1. FABRICATED FROM 22 GA. GALVANIZED STEEL. MECHANICALLY SEALED, LEAK RESISTANT CONSTRUCTION.

2. HOT WATER COILS HAVE COPPER TUBES AND ALUMINUM FINS WITH O.D. SWEAT CONNECTIONS.

3. METHOD OF VENTING HOT WATER COIL IS TO BE PROVIDED BY INSTALLING CONTRACTOR.

4. HANDING OF HOT WATER COILS CAN BE ON THE SAME SIDE AS THE CONTROLS, OR OPPOSITE SIDE. LEFT HAND UNIT WITH SAME SIDE CONNECTION IS ILLUSTRATED ABOVE.

5. ALLOW 1 1/2" (38) MINIMUM CLEARANCE FOR INSTALLATION AT THIS END.

6. PERFORMANCE RATED AND CERTIFIED IN ACCORDANCE WITH THE CURRENT EDITION OF AHRI STANDARD 410.

7. STANDARD COILS SUPPLIED WITH 10 FINS PER INCH.

**OPTIONS:**

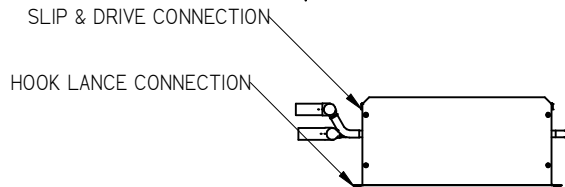
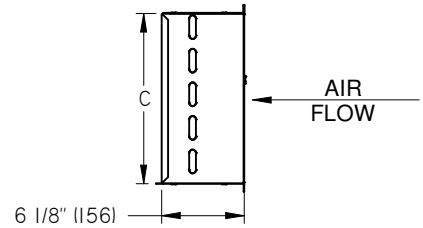
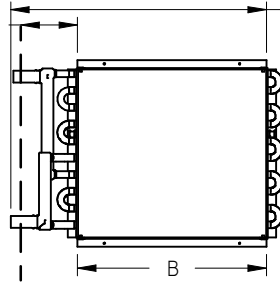
HC - HIGH CAPACITY COILS SUPPLIED WITH 12 FINS PER INCH.

ALL METRIC DIMENSIONS ( ) ARE SOFT CONVERTED. IMPERIAL DIMENSIONS ARE CONVERTED TO METRIC AND ROUNDED TO THE NEAREST MILLIMETER.

<b>PROJECT:</b>		 <b>HOT WATER COILS</b> FAN POWERED TERMINALS FDC & FDC DOAS SIZES 10-50
<b>ENGINEER:</b>		
<b>CUSTOMER:</b>		
<b>SUBMITTAL DATE:</b>	<b>SPEC. SYMBOL:</b>	
		CH 267930 09/26/2019

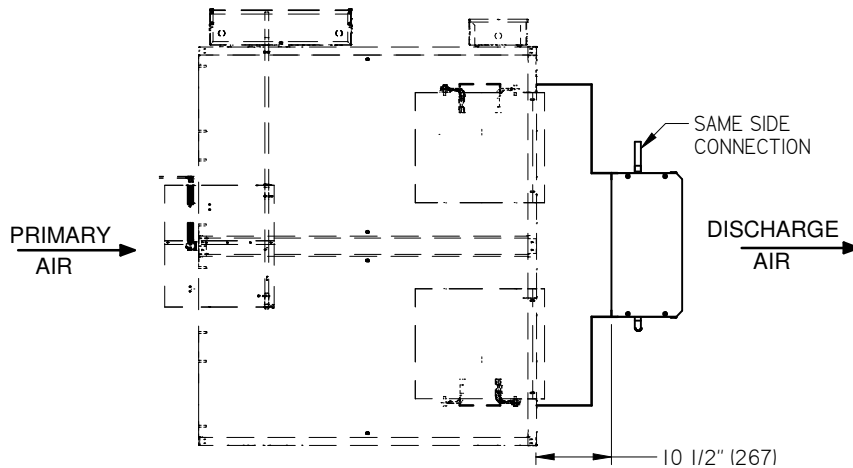


SEE NOTE #6 7/8" (22) DIA @ 4-1/4" (108)



UNIT SIZE	IMPERIAL UNITS (inches)							
	STANDARD COILS				HIGH CAPACITY COILS			
	B	C	CONNECTION SIZES		B	C	CONNECTION SIZES	
			1 ROW	2 ROW			1 ROW	2 ROW
60	38	18	7/8	7/8	38	18	7/8	7/8

UNIT SIZE	SI UNITS (mm)							
	STANDARD COILS				HIGH CAPACITY COILS			
	B	C	CONNECTION SIZES		B	C	CONNECTION SIZES	
			1 ROW	2 ROW			1 ROW	2 ROW
60	965	457	22	22	965	457	22	22



**NOTES:**

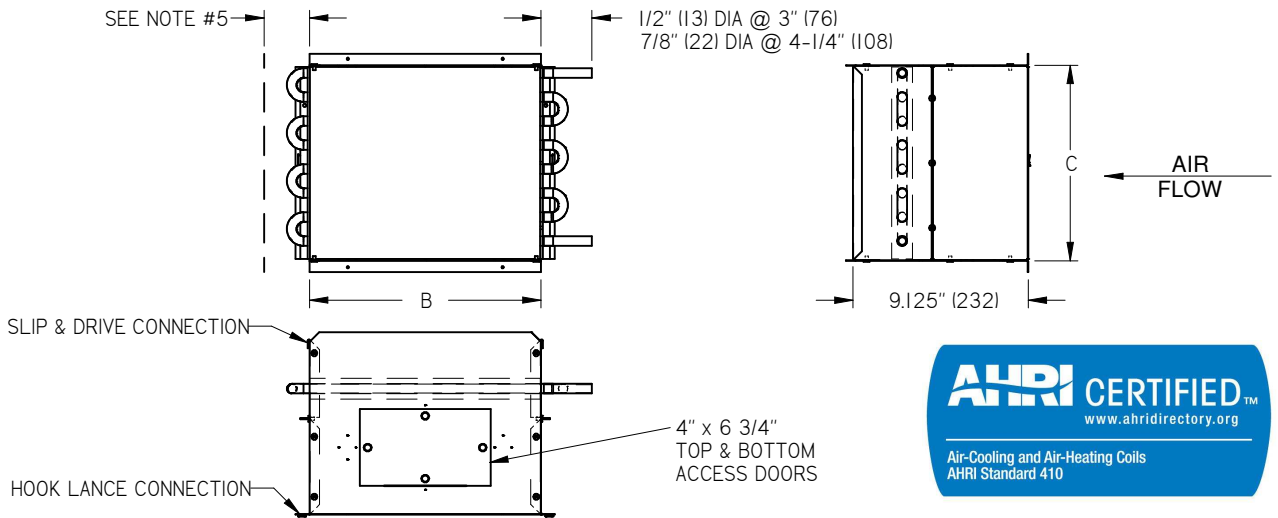
- FABRICATED FROM 22 GA. GALVANIZED STEEL. MECHANICALLY SEALED, LEAK RESISTANT CONSTRUCTION.
- HOT WATER COILS HAVE COPPER TUBES AND ALUMINUM FINNS WITH O.D. SWEAT CONNECTIONS.
- METHOD OF VENTING HOT WATER COIL IS TO BE PROVIDED BY INSTALLING CONTRACTOR.
- FLANGED ADAPTOR REQUIRED TO ATTACH HOT WATER COILS TO FANS.
- HANDING OF HOT WATER COILS CAN BE ON THE SAME SIDE AS THE CONTROLS, OR OPPOSITE SIDE LEFT HAND UNIT WITH SAME SIDE CONNECTION IS ILLUSTRATED ABOVE.
- ALLOW 1 1/2" (38) MINIMUM CLEARANCE FOR INSTALLATION AT THIS END.
- PERFORMANCE RATED AND CERTIFIED IN ACCORDANCE WITH THE CURRENT EDITION OF AHRI STANDARD 410.
- STANDARD COILS SUPPLIED WITH 10 FINNS PER INCH.

**OPTIONS:**

- HC - HIGH CAPACITY COILS SUPPLIED WITH 12 FINNS PER INCH.

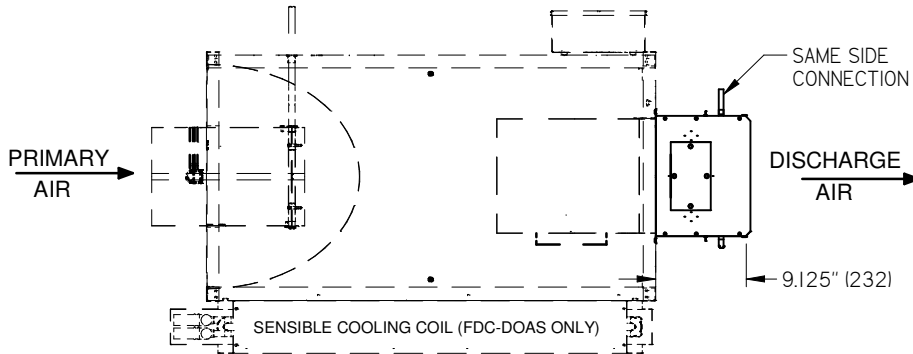
ALL METRIC DIMENSIONS ( ) ARE SOFT CONVERTED. IMPERIAL DIMENSIONS ARE CONVERTED TO METRIC AND ROUNDED TO THE NEAREST MILLIMETER.

<b>PROJECT:</b>		
<b>ENGINEER:</b>		
<b>CUSTOMER:</b>		GH
<b>SUBMITTAL DATE:</b>		267930
<b>SPEC. SYMBOL:</b>		09/26/2019
<b>HOT WATER COILS</b> FAN POWERED TERMINALS FDC SIZE 60		



UNIT SIZE	IMPERIAL UNITS (inches)							
	STANDARD COILS				HIGH CAPACITY COILS			
	B	C	CONNECTION SIZES		B	C	CONNECTION SIZES	
			1 ROW	2 ROW			1 ROW	2 ROW
10	12	10	1/2	7/8	14	12 1/2	1/2	7/8
20	16	15	7/8	7/8	20	17 1/2	1/2	7/8
30	16	15	7/8	7/8	20	17 1/2	1/2	7/8
40	16	15	7/8	7/8	20	17 1/2	1/2	7/8
50	20	17 1/2	7/8	7/8	28	17 1/2	7/8	7/8

UNIT SIZE	SI UNITS (mm)							
	STANDARD COILS				HIGH CAPACITY COILS			
	B	C	CONNECTION SIZES		B	C	CONNECTION SIZES	
			1 ROW	2 ROW			1 ROW	2 ROW
10	305	254	13	22	356	318	13	22
20	406	381	22	22	508	445	13	22
30	406	381	22	22	508	445	13	22
40	406	381	22	22	508	445	13	22
50	508	445	22	22	711	445	22	22



**NOTES:**

- FABRICATED FROM 22 GA. GALVANIZED STEEL. MECHANICALLY SEALED, LEAK RESISTANT CONSTRUCTION.
- HOT WATER COILS HAVE COPPER TUBES AND ALUMINUM FINNS WITH O.D. SWEAT CONNECTIONS.
- METHOD OF VENTING HOT WATER COIL IS TO BE PROVIDED BY INSTALLING CONTRACTOR.
- HANDING OF HOT WATER COILS CAN BE ON THE SAME SIDE AS THE CONTROLS, OR OPPOSITE SIDE. LEFT HAND UNIT WITH SAME SIDE CONNECTION IS ILLUSTRATED ABOVE.
- ALLOW 1 12" (38) MINIMUM CLEARANCE FOR INSTALLATION AT THIS END.

6. PERFORMANCE RATED AND CERTIFIED IN ACCORDANCE WITH THE CURRENT EDITION OF AHRI STANDARD 410.

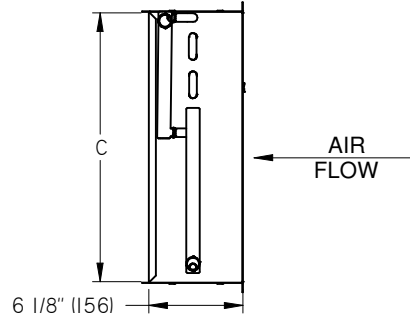
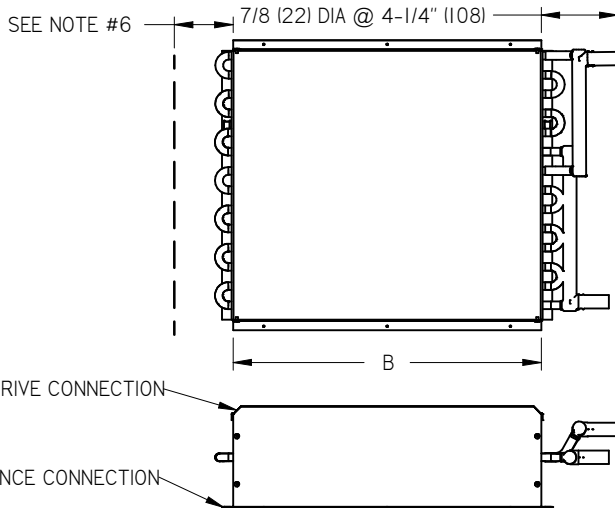
7. STANDARD COILS SUPPLIED WITH 10 FINNS PER INCH.

**OPTIONS:**

- HC - HIGH CAPACITY COILS SUPPLIED WITH 12 FINNS PER INCH
- CAD - ACCESS DOOR W/SCREWS
- CADL - ACCESS DOOR W/SNAP LATCHES
- CADQ - COIL ACCESS DOOR W/QUARTER TURN SASH LATCHES

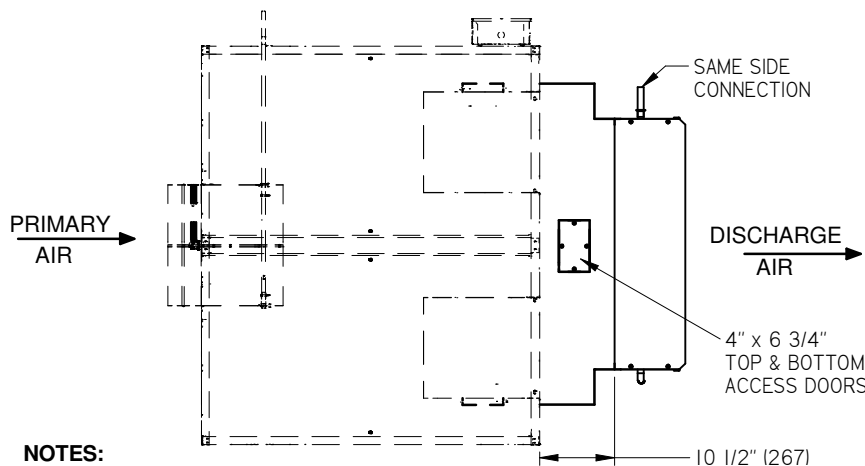
ALL METRIC DIMENSIONS ( ) ARE SOFT CONVERTED. IMPERIAL DIMENSIONS ARE CONVERTED TO METRIC AND ROUNDED TO THE NEAREST MILLIMETER.

<b>PROJECT:</b>		 <b>HOT WATER COILS</b> FAN POWERED TERMINALS FDC & FDC DOAS w/ ACCESS DOOR SIZES 10-50
<b>ENGINEER:</b>		
<b>CUSTOMER:</b>		
<b>SUBMITTAL DATE:</b>	<b>SPEC. SYMBOL:</b>	
		CH 267931 09/26/2019



UNIT SIZE	IMPERIAL UNITS (inches)							
	STANDARD COILS				HIGH CAPACITY COILS			
	B	C	CONNECTION SIZES		B	C	CONNECTION SIZES	
			1 ROW	2 ROW			1 ROW	2 ROW
60	38	18	7/8	7/8	38	18	7/8	7/8

UNIT SIZE	SI UNITS (mm)							
	STANDARD COILS				HIGH CAPACITY COILS			
	B	C	CONNECTION SIZES		B	C	CONNECTION SIZES	
			1 ROW	2 ROW			1 ROW	2 ROW
60	965	457	22	22	965	457	22	22



**NOTES:**

- FABRICATED FROM 22 GA. GALVANIZED STEEL. MECHANICALLY SEALED, LEAK RESISTANT CONSTRUCTION.
- HOT WATER COILS HAVE COPPER TUBES AND ALUMINUM FINS WITH O.D. SWEAT CONNECTIONS.
- METHOD OF VENTING HOT WATER COIL IS TO BE PROVIDED BY INSTALLING CONTRACTOR.
- FLANGED ADAPTOR REQUIRED TO ATTACH HOT WATER COILS TO FANS.
- HANDING OF HOT WATER COILS CAN BE ON THE SAME SIDE AS THE CONTROLS, OR OPPOSITE SIDE. LEFT HAND UNIT WITH SAME SIDE CONNECTION IS ILLUSTRATED ABOVE.
- ALLOW 1 1/2" (38) MINIMUM CLEARANCE FOR INSTALLATION AT THIS END.

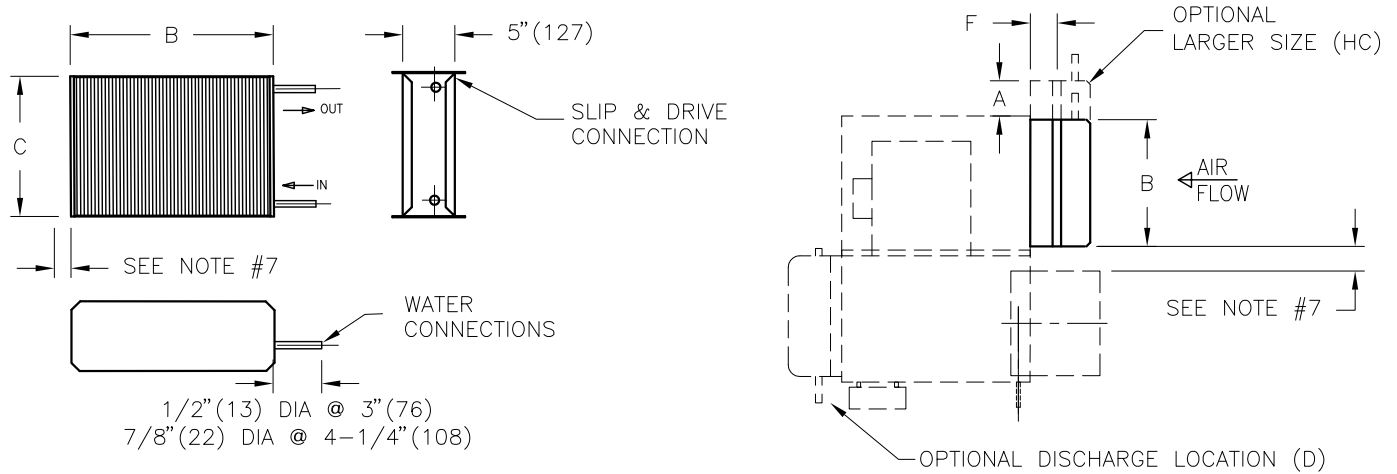
- PERFORMANCE RATED AND CERTIFIED IN ACCORDANCE WITH THE CURRENT EDITION OF AHRI STANDARD 410.
- STANDARD COILS SUPPLIED WITH 10 FINS PER INCH.

**OPTIONS:**

- HC - HIGH CAPACITY COILS SUPPLIED WITH 12 FINS PER INCH
- CAD - ACCESS DOOR W/SCREWS
- CADL - ACCESS DOOR W/SNAP LATCHES
- CADQ - COIL ACCESS DOOR W/QUARTER TURN SASH LATCHES

ALL METRIC DIMENSIONS ( ) ARE SOFT CONVERTED. IMPERIAL DIMENSIONS ARE CONVERTED TO METRIC AND ROUNDED TO THE NEAREST MILLIMETER.

<b>PROJECT:</b>		 <b>HOT WATER COILS</b> FAN POWERED TERMINALS FDC w/ ACCESS DOOR SIZE 60
<b>ENGINEER:</b>		
<b>CUSTOMER:</b>		
<b>SUBMITTAL DATE:</b>	<b>SPEC. SYMBOL:</b>	
		CH 267931 09/26/2019



UNIT SIZE	IMPERIAL UNITS (inches)										
	STANDARD COILS					HIGH CAPACITY COILS					
	B	C	F	CONNECTION SIZES		B	C	A	F	CONNECTION SIZES	
				1 ROW	2 ROW					1 ROW	2 ROW
20,30	14	12½	1	7/8	7/8	18	14	1¾	4	½	7/8
40	16	15	1	7/8	7/8	20	17½	1¾	4	½	7/8
50	20	17½	1	7/8	7/8	28	17½	4¼	4	7/8	7/8
60	24	18	1	7/8	7/8	28	17½	4¼	4	7/8	7/8

UNIT SIZE	METRIC UNITS (mm)										
	STANDARD COILS					HIGH CAPACITY COILS					
	B	C	F	CONNECTION SIZES		B	C	A	F	CONNECTION SIZES	
				1 ROW	2 ROW					1 ROW	2 ROW
20,30	356	318	25	22	22	457	356	44	102	13	22
40	406	381	25	22	22	508	445	44	102	13	22
50	508	445	25	22	22	711	445	108	102	22	22
60	610	457	25	22	22	711	445	108	102	22	22

**NOTES:**

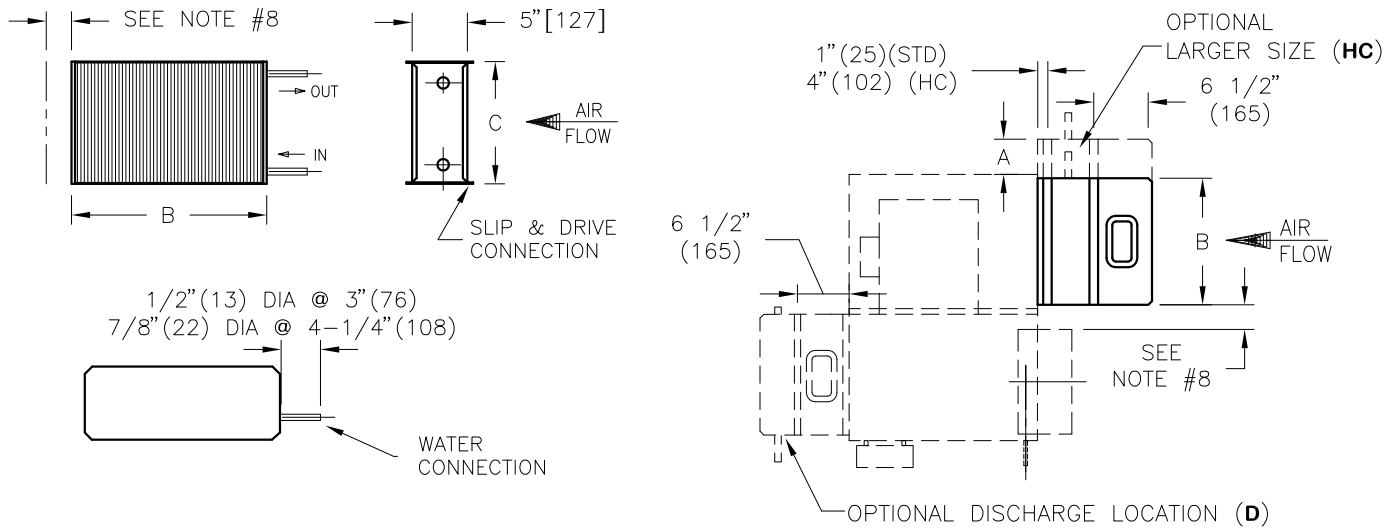
- FABRICATED FROM 22 GA. GALVANIZED STEEL. MECHANICALLY SEALED, LEAK RESISTANT CONSTRUCTION.
- HOT WATER COILS HAVE COPPER TUBES AND ALUMINUM FINS WITH O.D. SWEAT CONNECTIONS.
- REFER TO SUBMITTED TERMINAL UNIT SCHEDULE FOR AIR VOLUMES AND HOT WATER COIL CAPACITIES.
- METHOD OF VENTING HOT WATER COIL IS TO BE PROVIDED BY INSTALLING CONTRACTOR
- SLIP & DRIVE FLANGED ADAPTOR REQUIRED TO ATTACH HOT WATER COILS TO FANS.
- HAND OF HOT WATER COIL CONNECTIONS IS DETERMINED WHEN VIEWED FROM AIR INLET SIDE. RIGHT HAND COIL CONNECTION IS ILLUSTRATED ABOVE. LEFT HAND CONNECTION NOT AVAILABLE.
- ALLOW 1½" (38) MINIMUM CLEARANCE FOR INSTALLATION AT THIS END.
- WATER COILS ARE MOUNTED ON RETURN AIR INLET.
- PERFORMANCE RATED AND CERTIFIED IN ACCORDANCE WITH THE CURRENT EDITION OF ARI STANDARD 410.
- STANDARD COILS SUPPLIED WITH 10 FINS PER INCH.

**OPTIONS:**

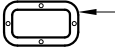
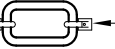
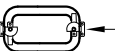
- HC – HIGH CAPACITY COILS SUPPLIED WITH 12 FINS PER INCH.
- D – DISCHARGE COIL LOCATION

ALL METRIC DIMENSIONS ( ) ARE SOFT CONVERTED. IMPERIAL DIMENSIONS ARE CONVERTED TO METRIC AND ROUNDED TO THE NEAREST MILLIMETER.

<b>PROJECT:</b>		<b>PRICE</b> <sup>®</sup>	
<b>ENGINEER:</b>		<b>BG</b>	<b>HOT WATER COILS</b> FAN POWERED TERMINALS FPV,FEV,FDV 1-ROW or 2-ROW SIZES 20-60
<b>CUSTOMER:</b>		231172	
<b>SUBMITTAL DATE:</b>	<b>SPEC. SYMBOL:</b>	OCT 08	



**ACCESS DOOR OPTIONS:**

-  CAD-ACCESS DOOR  
W/SCREWS  
4" (102) x 6 3/4" (171)
-  CADL-ACCESS DOOR  
W/SNAP LATCHES  
4" (102) x 6 3/4" (171)
-  CADQ - COIL ACCESS DOOR  
W/QUARTER TURN SASH LATCHES  
4" (102) x 6 3/4" (171)

UNIT SIZE	IMPERIAL UNITS (inches)								
	STANDARD COILS				HIGH CAPACITY COILS				
	B	C	CONNECTION SIZES		B	C	A	CONNECTION SIZES	
			1 ROW	2 ROW				1 ROW	2 ROW
20,30	14	12 1/2	7/8	7/8	18	14	1 3/4	1/2	7/8
40	16	15	7/8	7/8	20	17 1/2	1 3/4	1/2	7/8
50	20	17 1/2	7/8	7/8	28	17 1/2	4 1/4	7/8	7/8
60	24	18	7/8	7/8	28	17 1/2	4 1/4	7/8	7/8

UNIT SIZE	METRIC UNITS (mm)								
	STANDARD COILS				HIGH CAPACITY COILS				
	B	C	CONNECTION SIZES		B	C	A	CONNECTION SIZES	
			1 ROW	2 ROW				1 ROW	2 ROW
20,30	356	318	22	22	457	356	44	13	22
40	406	381	22	22	508	445	44	13	22
50	508	445	22	22	711	445	108	22	22
60	610	457	22	22	711	445	108	22	22

**NOTES:**

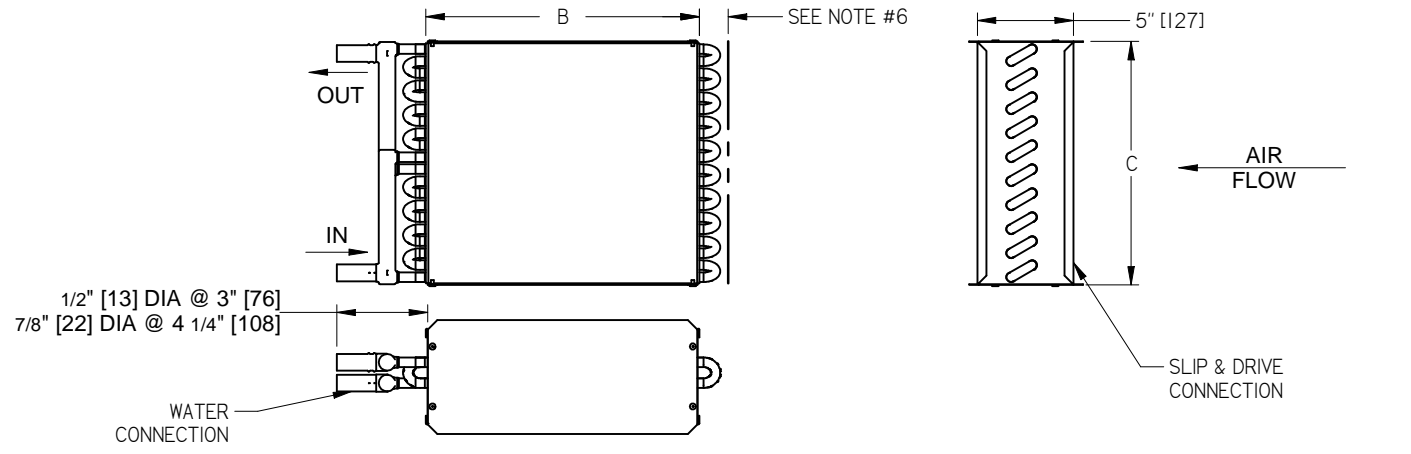
- FABRICATED FROM 22 GA. GALVANIZED STEEL. MECHANICALLY SEALED, LEAK RESISTANT CONSTRUCTION.
- HOT WATER COILS HAVE COPPER TUBES AND ALUMINUM FINS WITH O.D. SWEAT CONNECTIONS.
- REFER TO SUBMITTED TERMINAL UNIT SCHEDULE FOR AIR VOLUMES AND HOT WATER COIL CAPACITIES.
- METHOD OF VENTING HOT WATER COIL IS TO BE PROVIDED BY INSTALLING CONTRACTOR
- SLIP & DRIVE FLANGED ADAPTOR REQUIRED TO ATTACH HOT WATER COILS TO FANS.
- QUICK OPENING ACCESS DOOR FOR INSPECTION AND MAINTENANCE OF COIL IS FEATURED.
- HAND OF HOT WATER COIL CONNECTIONS IS DETERMINED WHEN VIEWED FROM AIR INLET SIDE. RIGHT HAND COIL CONNECTION IS ILLUSTRATED ABOVE. LEFT HAND CONNECTION NOT AVAILABLE.
- ALLOW 1 1/2" (38) MINIMUM CLEARANCE FOR INSTALLATION AT THIS END.
- WATER COILS ARE MOUNTED ON RETURN AIR INLET.
- PERFORMANCE RATED AND CERTIFIED IN ACCORDANCE WITH THE CURRENT EDITION OF ARI STANDARD 410.
- STANDARD COILS SUPPLIED WITH 10 FINS PER INCH.

**OPTIONS:**

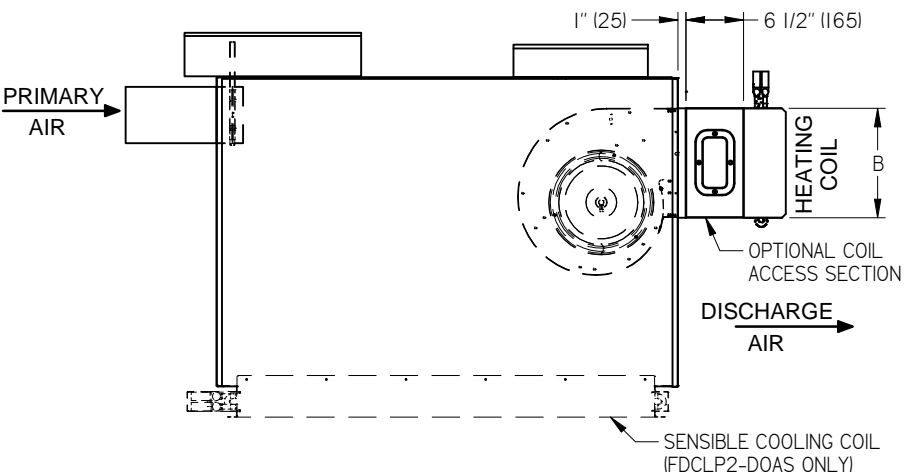
- HC -HIGH CAPACITY COILS SUPPLIED WITH 12 FINS PER INCH.
- D - DISCHARGE COIL LOCATION

ALL METRIC DIMENSIONS ( ) ARE SOFT CONVERTED. IMPERIAL DIMENSIONS ARE CONVERTED TO METRIC AND ROUNDED TO THE NEAREST MILLIMETER.

<b>PROJECT:</b>		<b>PRICE®</b>	
<b>ENGINEER:</b>		<b>BG</b>	<b>HOT WATER COILS</b> FAN POWERED TERMINALS FPV, FDV WITH ACCESS DOOR SIZES 20-60
<b>CUSTOMER:</b>		231173	
<b>SUBMITTAL DATE:</b>	<b>SPEC. SYMBOL:</b>	2012/08/16	



IMPERIAL UNITS (INCHES)									SI UNITS (mm)								
UNIT SIZE	STANDARD COILS				HIGH CAPACITY COILS				UNIT SIZE	STANDARD COILS				HIGH CAPACITY COILS			
	B	C	CONNECTION SIZES		B	C	CONNECTION SIZES			B	C	CONNECTION SIZES		B	C	CONNECTION SIZES	
			1 ROW	2 ROW			1 ROW	2 ROW				1 ROW	2 ROW			1 ROW	2 ROW
10	12	8	1/2	3/8	21	8	1/2	3/8	10	305	203	13	22	533	203	13	22
20	12	10	1/2	3/8	21	10	1/2	3/8	20	305	254	13	22	533	254	13	22
30	12	10	1/2	3/8	21	10	1/2	3/8	30	305	254	13	22	533	254	13	22



- ACCESS DOOR OPTIONS:**
- CAD - ACCESS DOOR W/SCREWS  
4" [102] x 6 3/4" [171]
  - CADL - ACCESS DOOR W/SNAP LATCHES  
4" [102] x 6 3/4" [171]
  - CADQ - COIL ACCESS DOOR W/QUARTER TURN SASH LATCHES  
4" [102] x 6 3/4" [171]

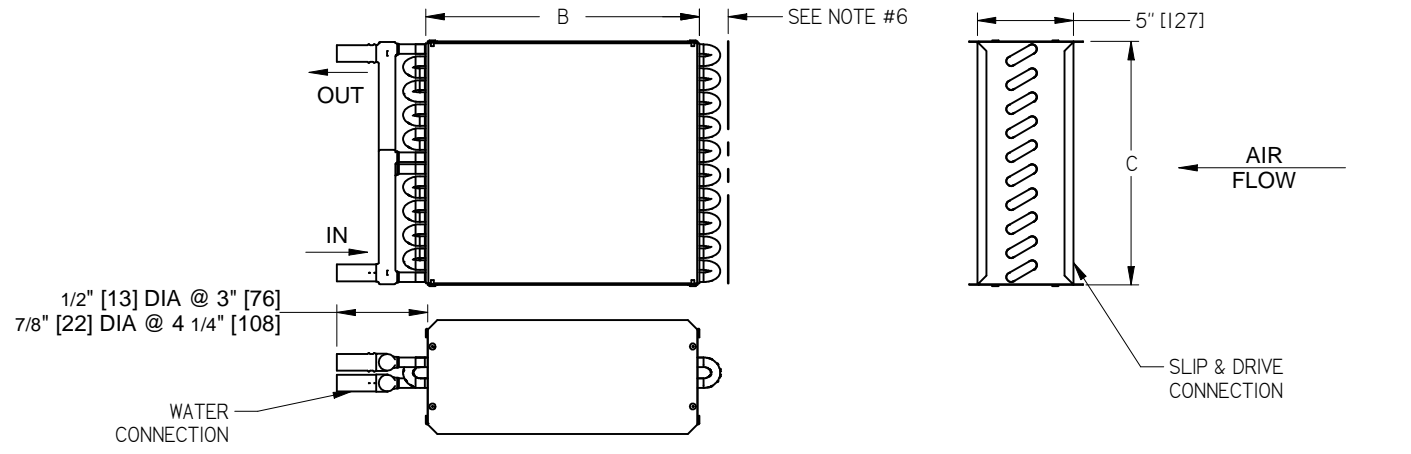
**NOTES:**

1. FABRICATED FROM 22 GA. GALVANIZED STEEL MECHANICALLY SEALED, LEAK RESISTANT CONSTRUCTION.
2. HOT WATER COILS HAVE COPPER TUBES AND ALUMINUM FINS WITH O.D. SWEAT CONNECTIONS.
3. REFER TO SUBMITTED SCHEDULE FOR AIR VOLUMES AND HOT WATER COIL CAPACITIES.
4. METHOD OF VENTING HOT WATER COIL IS TO BE PROVIDED BY INSTALLING CONTRACTOR.
5. HAND OF HOT WATER COIL CONNECTIONS IS DETERMINED WHEN VIEWED FROM AIR INLET SIDE.
6. ALLOW 1 1/2" (38) MINIMUM CLEARANCE FOR INSTALLATION AT THIS END.
7. WATER COILS ARE MOUNTED ON DISCHARGE OF UNIT.
8. PERFORMANCE RATED AND CERTIFIED IN ACCORDANCE WITH THE CURRENT EDITION OF AHRI STANDARD 410.
9. STANDARD COILS SUPPLIED WITH 10 FINS PER INCH, HC COILS - WITH 12 FINS PER INCH.

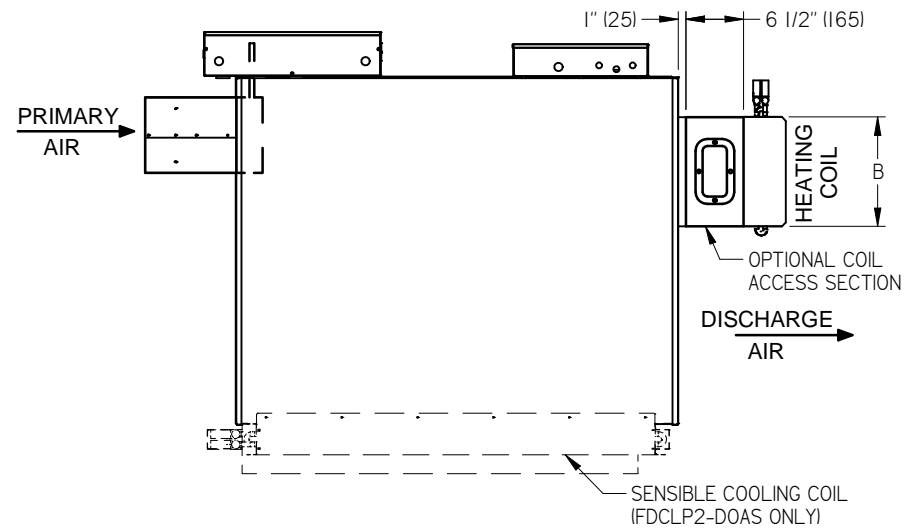
**OPTIONS:**  
 HC - HIGH CAPACITY WATER COIL

ALL METRIC DIMENSIONS ( ) ARE SOFT CONVERTED. IMPERIAL DIMENSIONS ARE CONVERTED TO METRIC AND ROUNDED TO THE NEAREST MILLIMETER.

<b>PROJECT:</b>		 <b>HOT WATER COILS</b> LOW PROFILE FAN POWERED TERMINAL CONSTANT VOLUME CONFIGURATION SIZES 10,20,30
<b>ENGINEER:</b>		
<b>CUSTOMER:</b>		
<b>SUBMITTAL DATE:</b>	<b>SPEC. SYMBOL:</b>	



UNIT SIZE	IMPERIAL UNITS (INCHES)								UNIT SIZE	SI UNITS (mm)							
	STANDARD COILS				HIGH CAPACITY COILS					STANDARD COILS				HIGH CAPACITY COILS			
	B	C	CONNECTION SIZES		B	C	CONNECTION SIZES			B	C	CONNECTION SIZES		B	C	CONNECTION SIZES	
40	14	12½	¾	¾	21	12½	¾	¾	40	356	318	22	22	533	318	22	22



- ACCESS DOOR OPTIONS:**
- CAD - ACCESS DOOR W/SCREWS  
4" [102] x 6 ¾" [171]
  - CADL - ACCESS DOOR W/SNAP LATCHES  
4" [102] x 6 ¾" [171]
  - CADQ - COIL ACCESS DOOR W/QUARTER TURN SASH LATCHES  
4" [102] x 6 ¾" [171]

**NOTES:**

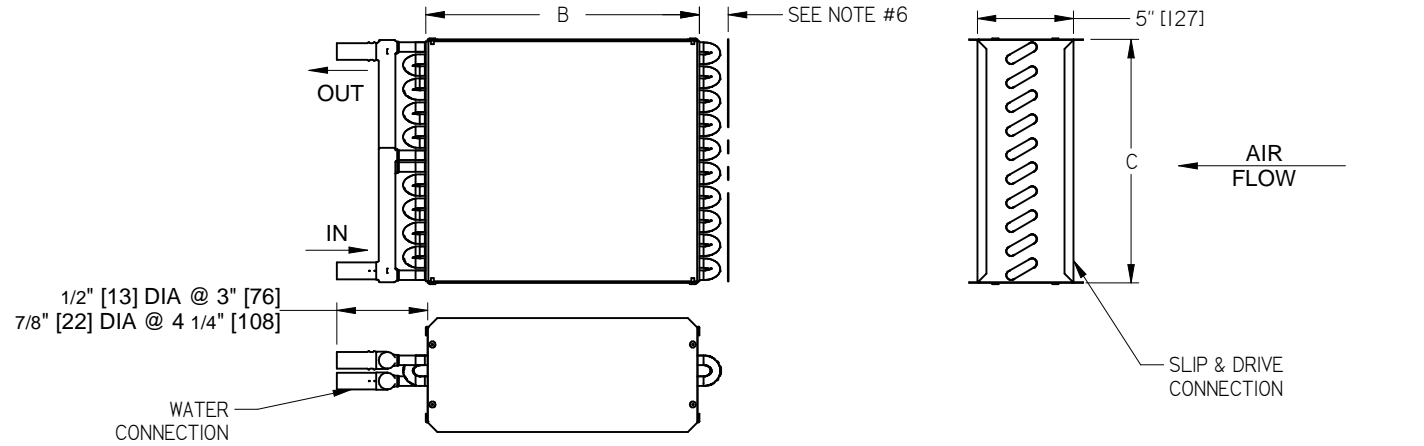
1. FABRICATED FROM 22 GA. GALVANIZED STEEL MECHANICALLY SEALED, LEAK RESISTANT CONSTRUCTION.
2. HOT WATER COILS HAVE COPPER TUBES AND ALUMINUM FINS WITH O.D. SWEAT CONNECTIONS.
3. REFER TO SUBMITTED SCHEDULE FOR AIR VOLUMES AND HOT WATER COIL CAPACITIES.
4. METHOD OF VENTING HOT WATER COIL IS TO BE PROVIDED BY INSTALLING CONTRACTOR.
5. HAND OF HOT WATER COIL CONNECTIONS IS DETERMINED WHEN VIEWED FROM AIR INLET SIDE.
6. ALLOW 1 ½" (38) MINIMUM CLEARANCE FOR INSTALLATION AT THIS END.
7. WATER COILS ARE MOUNTED ON DISCHARGE OF UNIT.
8. PERFORMANCE RATED AND CERTIFIED IN ACCORDANCE WITH THE CURRENT EDITION OF AHRI STANDARD 410.
9. STANDARD COILS SUPPLIED WITH 10 FINS PER INCH, HC COILS - WITH 12 FINS PER INCH.

**OPTIONS:**  
 HC - HIGH CAPACITY WATER COIL

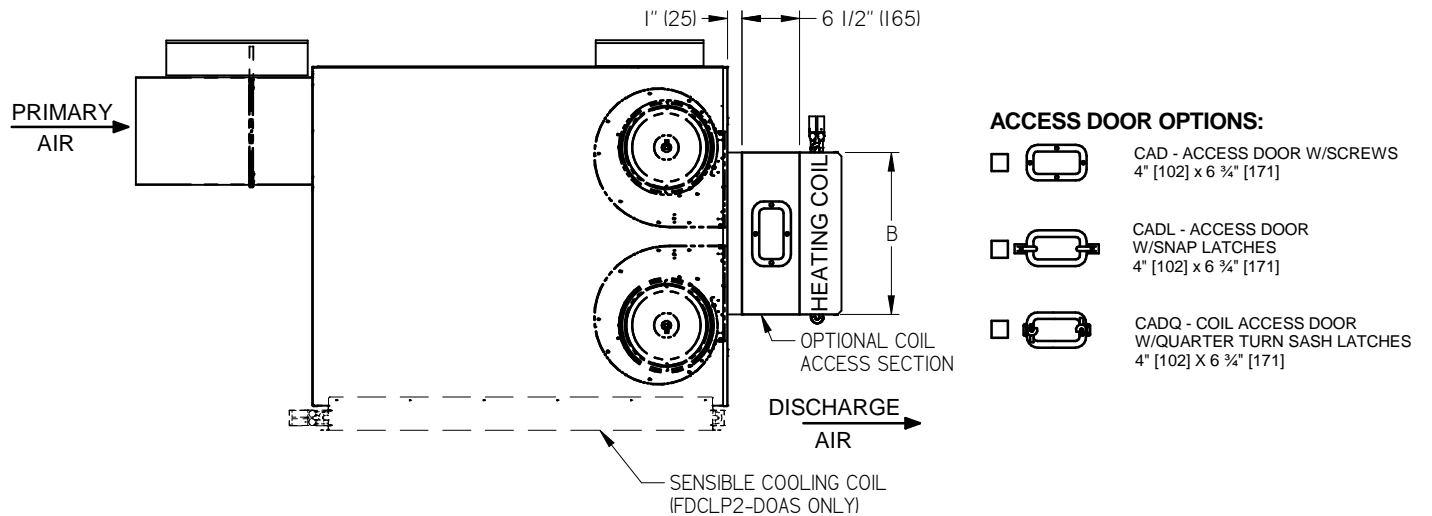
ALL METRIC DIMENSIONS ( ) ARE SOFT CONVERTED. IMPERIAL DIMENSIONS ARE CONVERTED TO METRIC AND ROUNDED TO THE NEAREST MILLIMETER.

<b>PROJECT:</b>		 <b>HOT WATER COILS</b> LOW PROFILE FAN POWERED TERMINAL CONSTANT VOLUME CONFIGURATION SIZE 40
<b>ENGINEER:</b>		
<b>CUSTOMER:</b>		
<b>SUBMITTAL DATE:</b>	<b>SPEC. SYMBOL:</b>	
		 <b>266718</b> MAR 2016





IMPERIAL UNITS (INCHES)									SI UNITS (mm)								
UNIT SIZE	STANDARD COILS				HIGH CAPACITY COILS				UNIT SIZE	STANDARD COILS				HIGH CAPACITY COILS			
	B	C	CONNECTION SIZES		B	C	CONNECTION SIZES			B	C	CONNECTION SIZES		B	C	CONNECTION SIZES	
			1 ROW	2 ROW			1 ROW	2 ROW				1 ROW	2 ROW			1 ROW	2 ROW
50	21	10	1/2	3/8	36	10	3/8	3/8	50	533	254	13	22	914	254	22	22



**NOTES:**

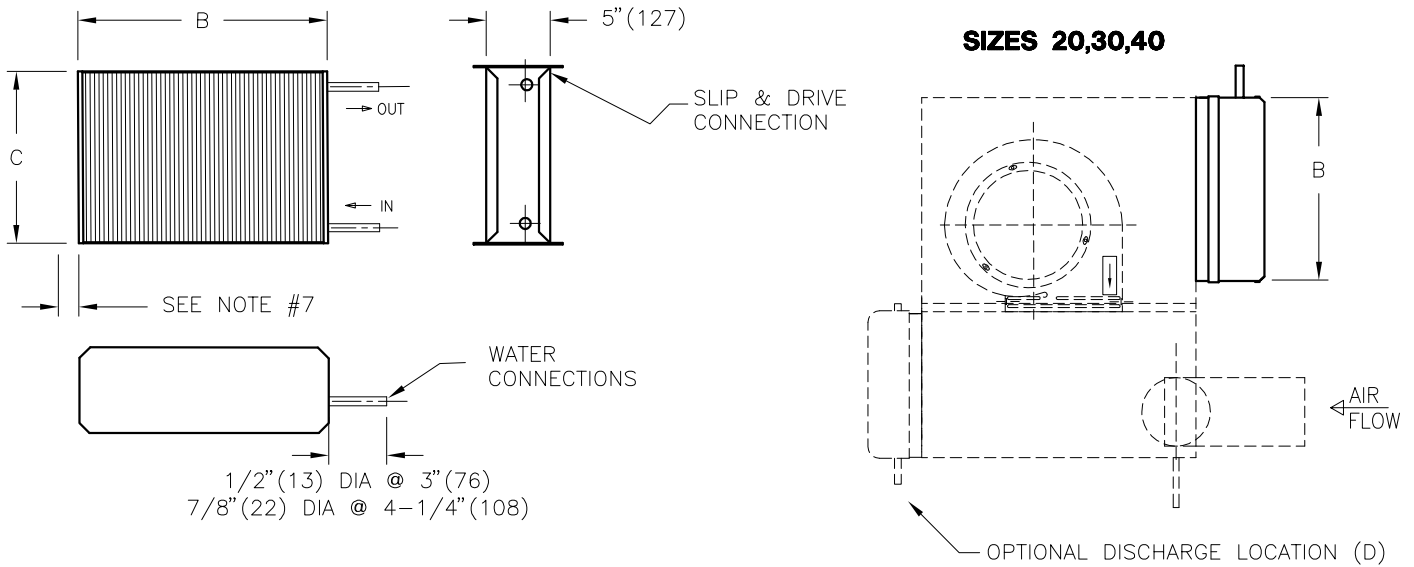
1. FABRICATED FROM 22 GA. GALVANIZED STEEL MECHANICALLY SEALED, LEAK RESISTANT CONSTRUCTION.
2. HOT WATER COILS HAVE COPPER TUBES AND ALUMINUM FINS WITH O.D. SWEAT CONNECTIONS.
3. REFER TO SUBMITTED SCHEDULE FOR AIR VOLUMES AND HOT WATER COIL CAPACITIES.
4. METHOD OF VENTING HOT WATER COIL IS TO BE PROVIDED BY INSTALLING CONTRACTOR.
5. HAND OF HOT WATER COIL CONNECTIONS IS DETERMINED WHEN VIEWED FROM AIR INLET SIDE.
6. ALLOW 1 1/2" (38) MINIMUM CLEARANCE FOR INSTALLATION AT THIS END.
7. WATER COILS ARE MOUNTED ON DISCHARGE OF UNIT.
8. PERFORMANCE RATED AND CERTIFIED IN ACCORDANCE WITH THE CURRENT EDITION OF AHRI STANDARD 410.
9. STANDARD COILS SUPPLIED WITH 10 FINS PER INCH, HC COILS - WITH 12 FINS PER INCH.

**OPTIONS:**

- HC - HIGH CAPACITY WATER COIL

ALL METRIC DIMENSIONS ( ) ARE SOFT CONVERTED. IMPERIAL DIMENSIONS ARE CONVERTED TO METRIC AND ROUNDED TO THE NEAREST MILLIMETER.

<b>PROJECT:</b>		
<b>ENGINEER:</b>		
<b>CUSTOMER:</b>		
<b>SUBMITTAL DATE:</b>		
<b>SPEC. SYMBOL:</b>		
		<b>266718</b>
		<b>MAR 2016</b>
<b>HOT WATER COILS LOW PROFILE FAN POWERED TERMINAL CONSTANT VOLUME CONFIGURATION SIZE 50</b>		



UNIT SIZE	IMPERIAL UNITS (inches)			
	STANDARD COILS			
	B	C	CONNECTION SIZES	
			1 ROW	2 ROW
20	12	10	1/2	7/8
30	21	10	1/2	7/8
40	21	12 1/2	7/8	7/8

UNIT SIZE	SI UNITS (mm)			
	STANDARD COILS			
	B	C	CONNECTION SIZES	
			1 ROW	2 ROW
20	305	254	13	22
30	533	254	13	22
40	533	318	22	22

**NOTES:**

- FABRICATED FROM 22 GA. GALVANIZED STEEL. MECHANICALLY SEALED, LEAK RESISTANT CONSTRUCTION.
- HOT WATER COILS HAVE COPPER TUBES AND ALUMINUM FINNS WITH O.D. SWEAT CONNECTIONS.
- REFER TO SUBMITTED TERMINAL UNIT SCHEDULE FOR AIR VOLUMES AND HOT WATER COIL CAPACITIES.
- METHOD OF VENTING HOT WATER COIL IS TO BE PROVIDED BY INSTALLING CONTRACTOR
- SLIP & DRIVE FLANGED ADAPTOR REQUIRED TO ATTACH HOT WATER COILS TO FANS.
- HAND OF HOT WATER COIL CONNECTIONS IS DETERMINED WHEN VIEWED FROM AIR INLET SIDE. RIGHT HAND COIL CONNECTION IS ILLUSTRATED ABOVE.
- ALLOW 1 1/2 " (38) MINIMUM CLEARANCE FOR INSTALLATION AT THIS END.
- WATER COILS ARE MOUNTED ON RETURN AIR INLET.
- PERFORMANCE RATED AND CERTIFIED IN ACCORDANCE WITH THE CURRENT EDITION OF ARI STANDARD 410.
- STANDARD COILS SUPPLIED WITH 12 FINNS PER INCH.

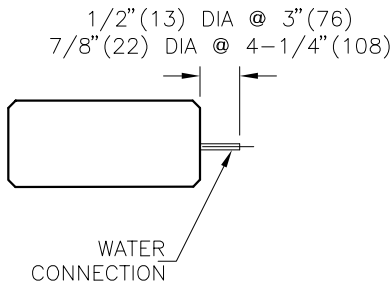
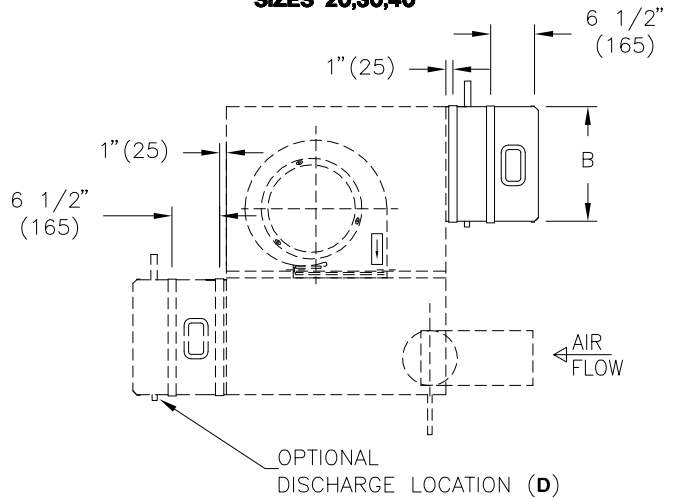
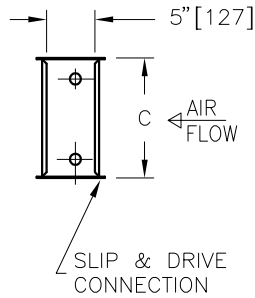
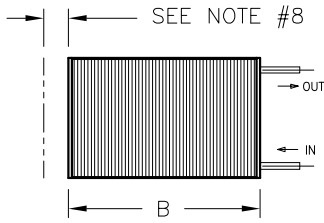
**OPTIONS:**

- D - DISCHARGE COIL LOCATION

ALL METRIC DIMENSIONS ( ) ARE SOFT CONVERTED. IMPERIAL DIMENSIONS ARE CONVERTED TO METRIC AND ROUNDED TO THE NEAREST MILLIMETER.

<b>PROJECT:</b>		<b>PRICE®</b>	
<b>ENGINEER:</b>		GF	<b>HOT WATER COILS</b> FAN POWERED TERMINALS FPVLP, FEVLP, FDVLP 1-ROW OR 2-ROW SIZES 20-40
<b>CUSTOMER:</b>		237120	
<b>SUBMITTAL DATE:</b>	<b>SPEC. SYMBOL:</b>	2015/10/02	

**SIZES 20,30,40**



CAD—ACCESS DOOR W/SCREWS  
4" (102) x 6 3/4" (171)

CADL—ACCESS DOOR  
W/SNAP LATCHES  
4" (102) x 6 3/4" (171)

CADQ — COIL ACCESS DOOR  
W/QUARTER TURN SASH LATCHES  
4" (102) x 6 3/4" (171)

UNIT SIZE	IMPERIAL UNITS (inches)			
	STANDARD COILS			CONNECTION SIZES
	B	C		
20	12	10	1/2	7/8
30	21	10	1/2	7/8
40	21	12 1/2	7/8	7/8

UNIT SIZE	SI UNITS (mm)			
	STANDARD COILS			CONNECTION SIZES
	B	C		
20	305	254	13	22
30	533	254	13	22
40	533	318	22	22

**NOTES:**

- FABRICATED FROM 22 GA. GALVANIZED STEEL. MECHANICALLY SEALED, LEAK RESISTANT CONSTRUCTION.
- HOT WATER COILS HAVE COPPER TUBES AND ALUMINUM FINS WITH O.D. SWEAT CONNECTIONS.
- REFER TO SUBMITTED TERMINAL UNIT SCHEDULE FOR AIR VOLUMES AND HOT WATER COIL CAPACITIES.
- METHOD OF VENTING HOT WATER COIL IS TO BE PROVIDED BY INSTALLING CONTRACTOR
- SLIP & DRIVE FLANGED ADAPTOR REQUIRED TO ATTACH HOT WATER COILS TO FANS.
- QUICK OPENING ACCESS DOOR FOR INSPECTION AND MAINTENANCE OF COIL IS FEATURED.
- HAND OF HOT WATER COIL CONNECTIONS IS DETERMINED WHEN VIEWED FROM AIR INLET SIDE. RIGHT HAND COIL CONNECTION IS ILLUSTRATED ABOVE.
- ALLOW 1 1/2" (38) MINIMUM CLEARANCE FOR INSTALLATION AT THIS END.
- WATER COILS ARE MOUNTED ON RETURN AIR INLET.
- PERFORMANCE RATED AND CERTIFIED IN ACCORDANCE WITH THE CURRENT EDITION OF ARI STANDARD 410.
- STANDARD COILS SUPPLIED WITH 12 FINS PER INCH.

**OPTIONS:**

- D — DISCHARGE COIL LOCATION

ALL METRIC DIMENSIONS ( ) ARE SOFT CONVERTED. IMPERIAL DIMENSIONS ARE CONVERTED TO METRIC AND ROUNDED TO THE NEAREST MILLIMETER.

<b>PROJECT:</b>		<b>PRICE®</b>	
<b>ENGINEER:</b>		GF	<b>HOT WATER COILS</b> FAN POWERED TERMINALS FPVLP, FDVLP WITH ACCESS DOOR SIZES 20-40
<b>CUSTOMER:</b>		237121	
<b>SUBMITTAL DATE:</b>	<b>SPEC. SYMBOL:</b>	2015/10/01	